



# YSU

**YANTRA SHILPA UDYOG PVT. LTD.**

**GSTIN : 19AAACY1206F1ZN**

**CIN : U74999WB1989PTC046243**

## ABOUT US

Established in 1987, Yantra Shilpa Udyog Private Limited has grown to become a leading manufacturer specializing in a diverse range of industrial equipment. Our product line includes Steep Angle Conveyors, Batch Type Ball Mills, Crushers, Vibrating Screens, and Feeders. We also offer a comprehensive array of processing equipment such as feeders, grinding mills, blungers, and crushing equipment. Our products are highly regarded by clients both domestically and internationally.

We are committed to delivering technologically advanced and flawless equipment to our clients. To ensure quality, we source raw materials from reliable vendors and engage professional services.

Initially focused on specialized ceramic and mineral processing equipment, dust disposal systems, extruding, mixing, kneading, and drying systems, we have expanded over time to manufacture feeding, crushing, conveying, and screening systems. This diversification has been pivotal in our growth.

Under the guidance of our mentors, Mr. P. L. Dutta and Mr. P. K. Hazra, we have achieved significant milestones. Their profound knowledge, market insights, and valuable suggestions have enabled us to consistently meet the exacting demands of our clients.

## MISSION

At Yantra Shilpa Udyog Private Limited, machine building is our passion, whether it's ceramic processing, bulk materials handling, dust disposal, or any other mineral processing. Our mission is guided by three core principles:

- **Quality is our habit** : We are committed to maintaining the highest standards of quality in every product and service we offer.
- **Innovation is our culture** : We foster a culture of continuous innovation, constantly seeking new ideas and technologies to enhance our products and processes.
- **Economizing is our destiny** : We strive to optimize resources and processes efficiently, ensuring cost-effectiveness without compromising quality or performance.

These principles drive our dedication to excellence, ensuring that we consistently deliver superior solutions to meet the evolving needs of our clients.

## OUR TEAM

At Yantra Shilpa Udyog Private Limited, we are supported by a team of highly qualified and experienced professionals who consistently exceed client expectations by delivering defect-free products. With comprehensive process understanding and exceptional skills, our team ensures the timely delivery of high-quality solutions.

### Our team comprises:

- Design Engineers
- Senior Production Engineers
- Quality Control Engineers
- Marketing Personnel
- Technical and Non-Technical Staff
- Administration Personnel

These dedicated individuals collectively handle a diverse range of equipment including Jaw Crushers, Filter Presses, Screw Blungers, Diaphragm Pumps, Vibro Feeders, Roll Crushers, Idlers with brackets, Pulleys, Steep Angle Conveyors, Chain Conveyors, Industrial Pug Mills, Rod Mills, Ball Mills (Wet & Dry), Hammer Mills, Drum Scrubbers, and Scrapers.

Through regular training sessions, our workforce stays updated with the latest technological advancements in the industry. This enables us to consistently deliver flawless and superior products to our clients. The extreme dedication and professional approach of our staff are instrumental in fostering long-term and amicable business relationships with our clients.

## INDUSTRIAL SETUP

Yantra Shilpa Udyog Private Limited operates from a spacious and advanced infrastructure that optimizes our production capabilities. Our facilities include both automatic and semi-automatic types, equipped with state-of-the-art machinery and equipment. This setup enables us to efficiently meet bulk client requirements on a monthly basis.

Our industrial unit is fully equipped to ensure precise design and manufacturing of our product range. The expertise of our team combined with our modern facilities allows us to consistently meet the diverse needs of our clients, ensuring high standards of quality and reliability.

## PRODUCT PORTFOLIO

Yantra Shilpa Udyog Private Limited specializes in manufacturing and supplying a comprehensive range of feeding, conveying, crushing, screening systems, and allied equipment to our clients. Over the years, our diverse product portfolio has catered to various industrial needs with precision and reliability.

Every product in our range undergoes rigorous quality checks and testing on various parameters to ensure adherence to the highest standards before delivery to our clients.

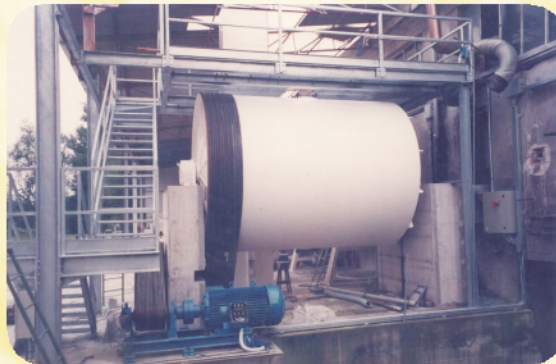
## OUR PRODUCT RANGE INCLUDES

- Steep Angle Conveyor
- Jaw Crusher
- Mineral Jig
- Chain Conveyor
- Rod Gate
- Pneumatic Slide Gate
- Pulley
- Industrial Pug Mill
- Vibro Feeder
- Hammer Mill
- Rod Mill
- Flat Conveyor System
- Impact Crusher
- Idler with bracket
- Ball Mill (Wet & Dry)
- Roll Crusher
- Hammer Crusher
- Screw Blunge

## PRODUCT GALLERY



**JAW CRUSHER**



**BALL MILL**



**ROLL CRUSHER**

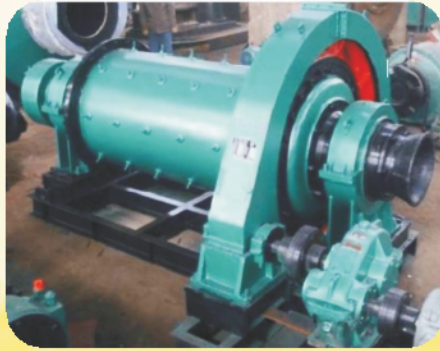


**STEEP ANGLE  
CONVEYOR**

# PRODUCT GALLERY



**DOUBLE DECK  
VIBRATING SCREEN**



**ROD MILL**



**IDLER**



**WET BALL MILL**



**DE-WATERING SCREEN**



**FLAT BELT CONVEYOR**



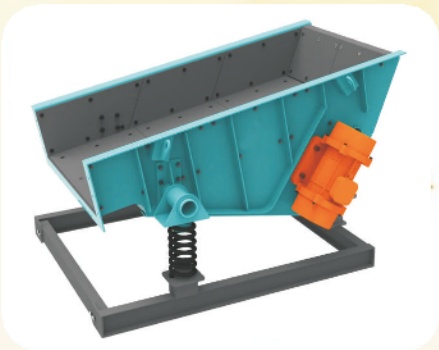
**STAINLESS STEEL  
CONVEYOR**



**INDUSTRIAL PUG MILL**



**YSU MAKE  
VIBRO MOTOR**



**GRIZLI FEEDER**



**INDUSTRIAL MIXTURE**



**HAMMER MILL**

## OUR CLIENTS



IndianOil



ADITYA BIRLA GROUP

नालको



NALCO



सेल SAIL



Jai Balaji Group



## CONTACT US

# YANTRA SHILPA UDYOG PVT. LTD.

70/6/1, DESHBANDHU ROAD (EAST), KOLKATA - 700 035, INDIA

BRANCH OFFICE : D-12, RAHUL, SANKIRTAYAN BITHI,

CITY CENTRE, DURGAPUR - 713216

E-MAIL : yantrashilpauddyog@gmail.com

WEBSITE : www.yantrashilpauddyog.com

### : CONTACT PERSON :

**MR. P.L. DUTTA**

Phone : +91-9830026582

E-mail : pldutta60@gmail.com

**MR. P.K. HAZRA**

Phone : 91-9433129724

E-mail : prdphazra@gmail.com

**MR. S.K. NEOGI**

Phone : 91-9830433598

E-mail : skneogi07@gmail.com